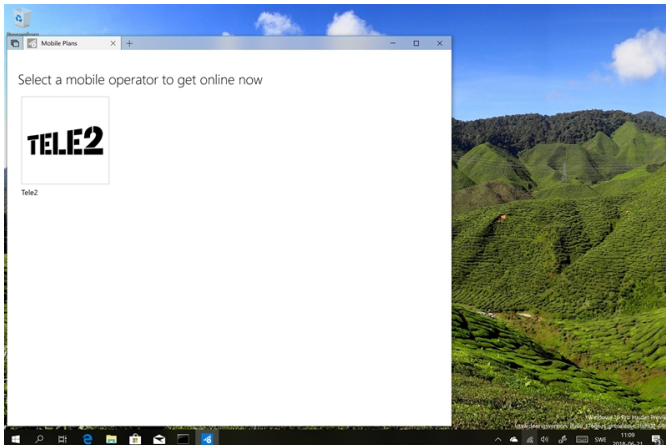


## Tele2 Offers eSIM Connectivity Through Windows

Written by Frederick Douglas  
06 July 2018

---

Tele2 follows on a "fruitful" cooperation with Microsoft as it becomes the first Swedish operator offering support for eSIM technology in Windows-based laptops and tablets.



The technology allows devices with the technology to connect to the internet anywhere, without additional hardware, via the Mobile Plans application preloaded in Windows 10. It is set to be included in most future laptops and tablets, with an increasing number to launch during H2 2018. In the long term, eSIM may even bring an end to physical SIM cards, and will find use beyond laptops and tablets.

"eSIM makes it possible to connect your device to internet anywhere, without the hassle of having to bring additional equipment, tether using your mobile phone, or scout for a wifi zone," Tele2 says. "The kinds of devices with internet connection increase every day. We already see connected cars, glasses, and even dog collars, but nearly everything will be part of the future connected society."

So far the Tele2 eSIM service is limited to the Swedish market, but the operator expects to increase range in the near future, as well as add support for other kinds of devices and technologies.

Go [Tele2 First Swedish OPERator to Launch eSIM Connectivity Through Windows](#)