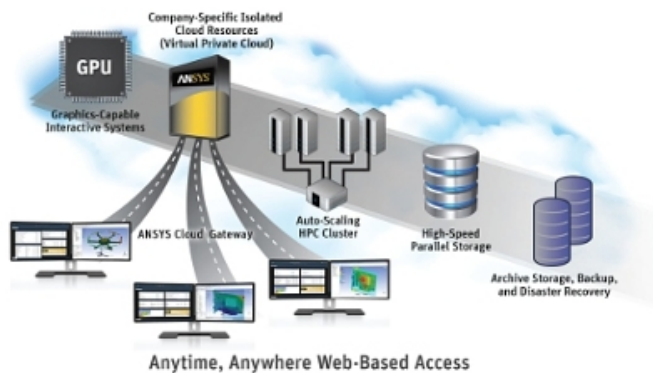


## Simulation Reaches the Cloud

Written by Marco Attard  
15 May 2015

---

ANSYS launches a cloud-based enterprise simulation solution with ANSYS 16.1 and ANSYS Enterprise Cloud, allowing engineers to deploy consistent simulation workflows and data regardless of geographic location.



The solution runs on Amazon Web Services (AWS) and promises to simplify and accelerate the transition to cloud-based simulation by providing a reference architecture for end-to-end simulation. It is deployable "within days" and scalable (including infrastructure and software assets) on demand as per business requirements.

A single-tenant environment secures customers data, while 3D interactive graphics workload and auto-scaling high-performance computing (HPC) support eliminates the need to move results between end users and cloud datacentre.

"Customers don't want to be saddled with specifying, procuring, deploying and managing simulation infrastructure," the company says. "Outsourcing the simulation datacenter allows customers to focus on developing breakthrough products while freeing up capital for other investments."

As well as the cloud-based component ANSYS 16.1 also adds distributed machine processing, genetic aggregation and improved multiphysics simulation.

Go [ANSYS 16.1 Delivers Enterprise Simulation on the Cloud](#)